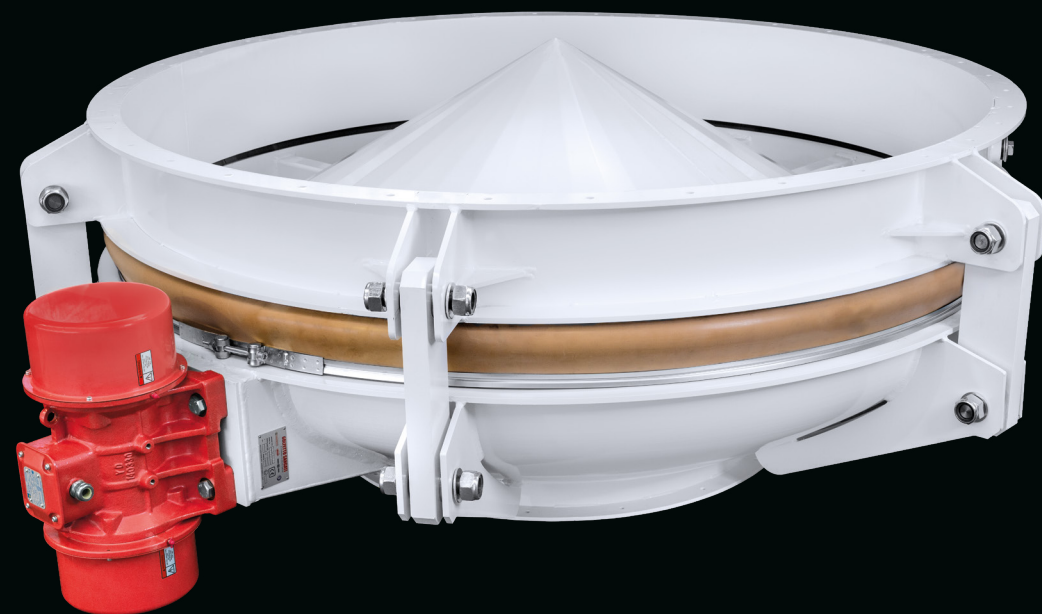


ESF

Vibrating Discharger

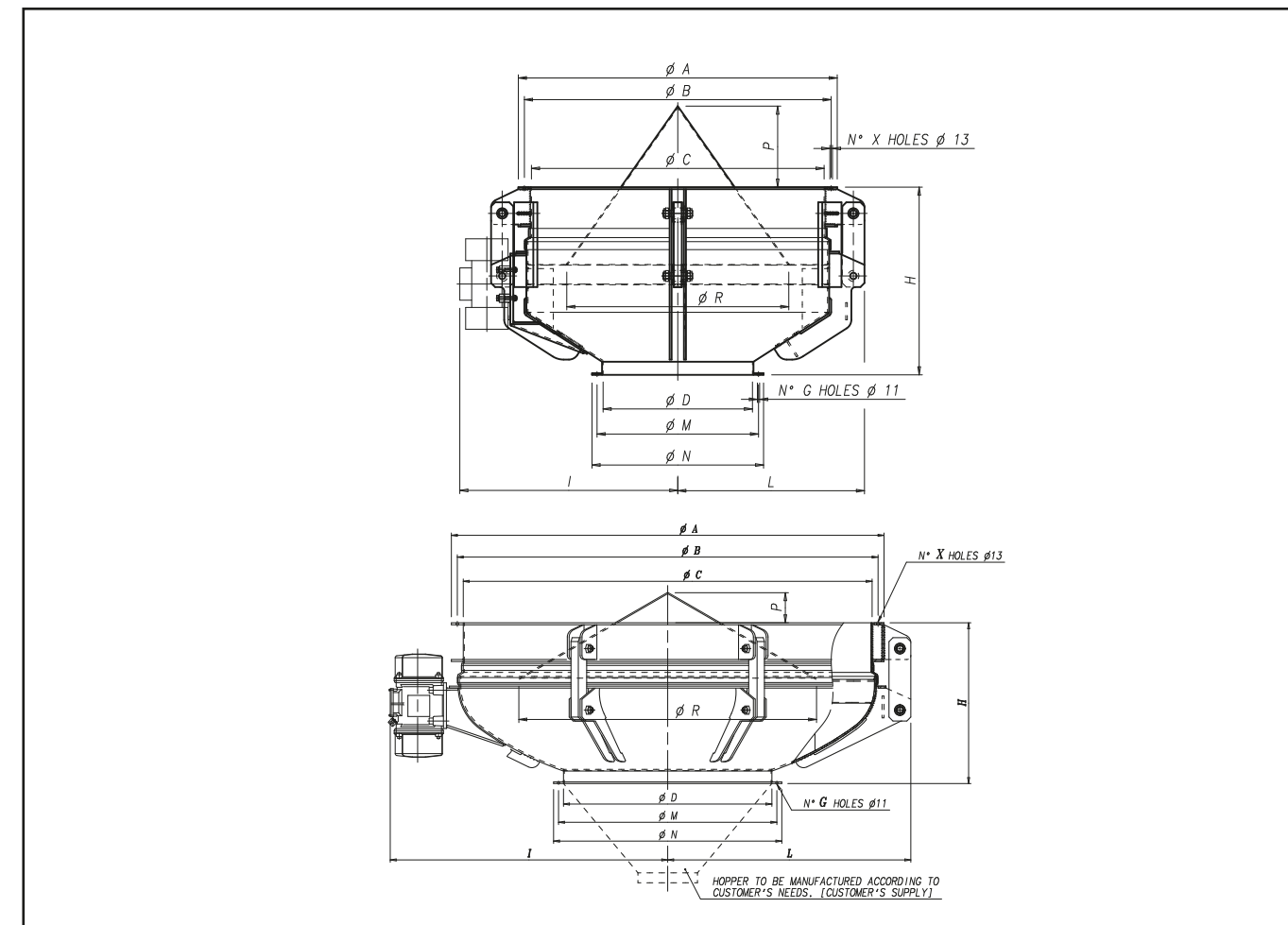
Extractor bottom with free oscillation movement for the extraction of floury products from the storage bins.



ESB

Vibrating Discharger

Extractor bottom with free oscillation movement for the extraction of by-products of milling section from the storage bins.



Tipo	Kw	ϕA	ϕB	ϕC	Sp.	N ^o G Holes ϕS	ϕD	H	I	ϕM	ϕN	N ^o G Holes ϕT	P	ϕR	Peso Kg
ESF-W100	1 x 0,62	1100	1030	960	4	16- $\phi 20$	300	620	790	335	360	8- $\phi 10$	0	500	310
ESF-W130		1400	1330	1260	4	20- $\phi 20$	300 500	755 660	940	335 540	360 570	8- $\phi 10$ 12- $\phi 12$	0 0	700	315
ESF-W160		1700	1630	1560	5	24- $\phi 24$	500	785	1085	540	570	12- $\phi 12$	60	900	390
ESF-W180		1940	1880	1800	5	32- $\phi 24$	500 750	920 790	1210	540 790	570 830	16- $\phi 12$ 20- $\phi 12$	50 50	1000	570 535
ESF-W210	2 x 0,62	2200	2130	2060	5	40- $\phi 24$	500 750	1000 880	1340	540 790	580 830	16- $\phi 14$ 20- $\phi 14$	50 55	1200	740 718

Type	Kw	A	B	C	D	E	F	G	H	I	L	M	N	X	P	ϕR	Weight Kg
ESB 90	0,3	980	920	860	450	465	735	8	800	720	625	500	550	20	40	570	310
ESB 120	0,6	1280	1220	1160	600	515	785	12	850	890	775	650	700	24	215	810	420
ESB 150	0,9	1580	1520	1460	750	595	865	12	930	1080	925	800	850	30	400	1100	650
ESB 180	1,6	1880	1820	1760	900	665	935	16	1000	1270	1075	950	1000	36	545	1300	940
ESB 210	1,6	2180	2120	2060	1050	765	1035	16	1100	1420	1225	1100	1150	40	725	1500	1240

Units = mm