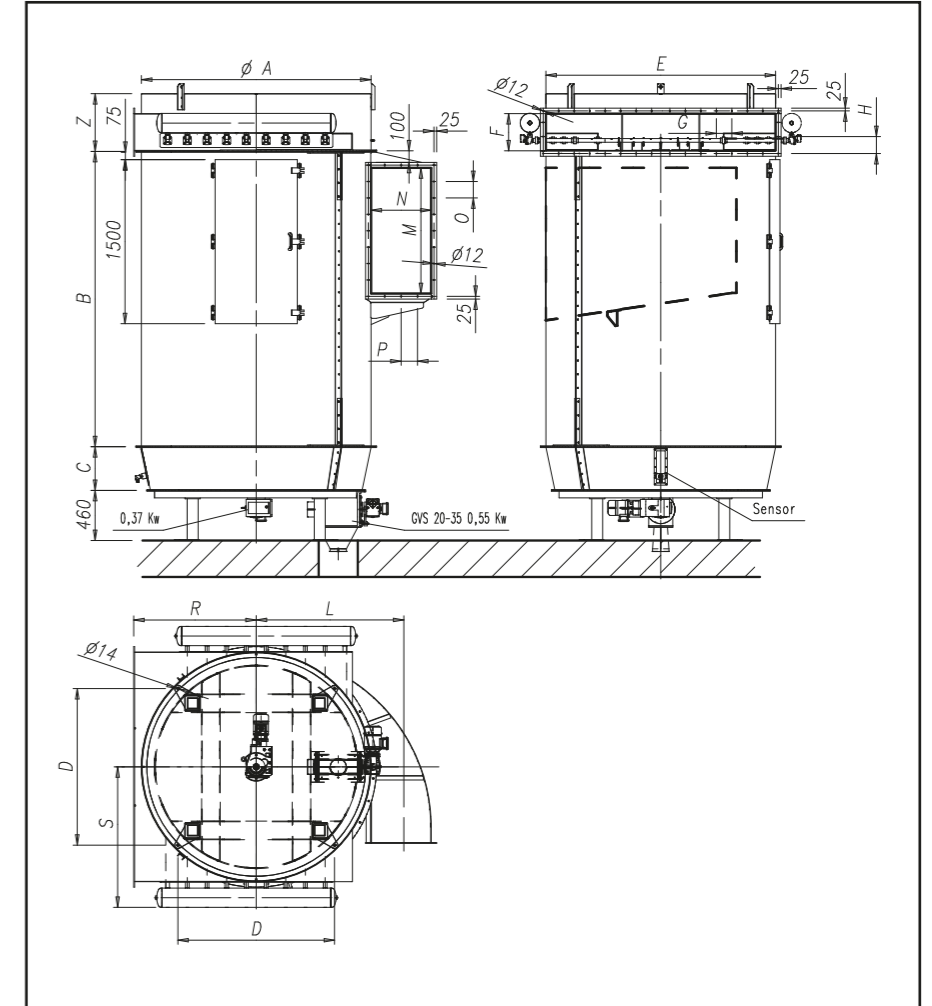


FAP

Multi-tubular Filter

The Multi-tubular Filter is developed to purify air from dust particles. The cleaning of the sleeves is ensured by high air (6 bar) jets inside the sleeves by steel Venturi tubes. The sleeves are connected to a series of electro pilots controlled by an electronic panel for the managing of time, pauses and cleaning cycles. The filter management is performed through a specific control device with display directly accessible by the user.



Model		Sizes														Consumption	Weight		
Type	Filtering Area m ²		ØA	B Sleeves length		C	D	ExF	G	H	L	MxN	O	P	R	S	Nl/min	Kg	
	2500	3000		2500	3000													Kg	Kg
30	28	34	1300	2700	3200	300	980	801x281	140	160	805	750x310	160	120	770	850	250	1100	1295
37	35	42																1195	1390
52	49	59	1750	2700	3200	410	1432	1450x440	150	163	1100	1000x450	150	125	1000	1110	380	1661	1903
65	61	73															460	1195	1390
88	83	99	2100	2700	3200	410	1432	2100x340	165	130	1325	1150x550	150	150	1120	1281	560	1825	1963
93	88	105															660	2719	2880
104	98	118	2250	2700	3200	450	1432	2250x440	164	163	1325	1400x550	145	150	1260	1365	760	2750	3000
130	123	147	2360	2700	3200	900	1932	2461x443	167	164	1535	1560x610	180	165	1350	1400	920	3480	3790
140	132	158															1100	4190	4450

Units = mm