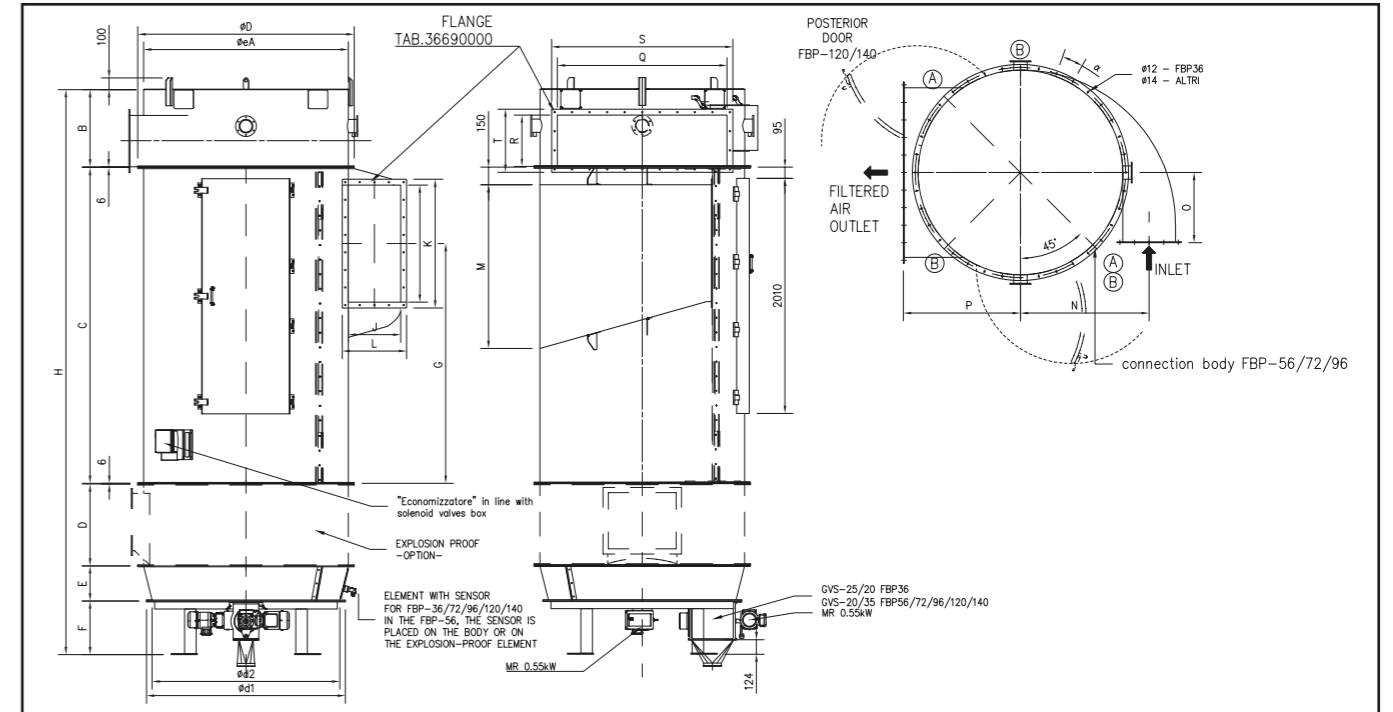


FBP

Filter low pressure

The Filter Low Pressure is developed to purify the air from dust particles. The cleaning of the sleeves is ensured by low pressure air (0,5 bar) jets inside the sleeves. These are connected to a series of electro pilots controlled by an electronic panel for the managing of time, pauses and cleaning cycles. The filter management is performed through a specific control device with display directly accessible by the user.



	36/25	36/30	56/25	56/30	72/25	72/30	96/25	96/30	120/25	120/30	140/25	140/30
Sleeves n.	36		56		72		96		120		140	
filtr. Area	33.9	40.7	52.7	63.3	67.8	81.4	90.4	108.5	113.0	135.7	131.9	158.3
ØeA	1300		1600		1750		2100		2250		2460	
ØD	1380		1700		1850		2200		2350		2560	
H	4080	4580	3785	4285	4130	[4730]	4210	4810	4282	4882	4564	5164
B	615		615		660		640		662		494	
C	2700	3200 2700+500	2700	3200 2700+500	2700	[3300] 2700+600	2700	3300 2700+600	2700	3300 2700+600	2700	3300 2700+600
D-exp.proof	Fike	Stuvent	Fike	Stuvent	Fike	Stuvent	Fike	Stuvent	Fike	Stuvent	Fike	Stuvent
	*	*	*	730	700	*	700	*	*	*	*	*
E	300		NO		300		400		450		900	
F	453		458		458		458		458		458	
G	2180		2125		2050		1975		1850		1770	
I×J	750×310		850×400		1000×450		1150×550		1400×550		1560×610	
K×L	830×390		950×500		1100×550		1250×650		1500×650		1660×710	
M	1050		1200		1400		1400		1700		1860	
N	805		1000		1100		1325		1400		1535	
O	450		550		600		700		800		830	
P	770		920		1000		1120		1260		1350	
Q×R	800×280		1100×420		1450×440		1616×440		2250×440		2460×442	
S×T	880×360		1100×520		1550×540		1716×540		2350×540		2560×542	
α	15°		10°		10°		11.25°		11.25°		11.25°	
Valves	GVS-25/20 mr 0.55 kw		GVS-20/35 mr 0.55 kw		GVS-20/35 mr 0.55 kw		GVS-20/35 mr 0.55 kw		GVS-20/35 mr 0.55 kw		GVS-20/35 mr 0.55 kw	
Ød1	1360		NO		1700		2000		2000		2000	
Ød2	1300		NO		1600		1940		1940		1940	
V×X	710×710		950×950		950×950		1162×1162		1162×1162		1162×1162	
X	500		600		600		750		750		750	
Weight	1195	1390	1661	1903	1825	1963	2719	2880	3480	3790	4190	4450
n. Elem. Body	1		2 -A-		2 -A-		2 -A-		3 -B-		3 -B-	

Units = mm