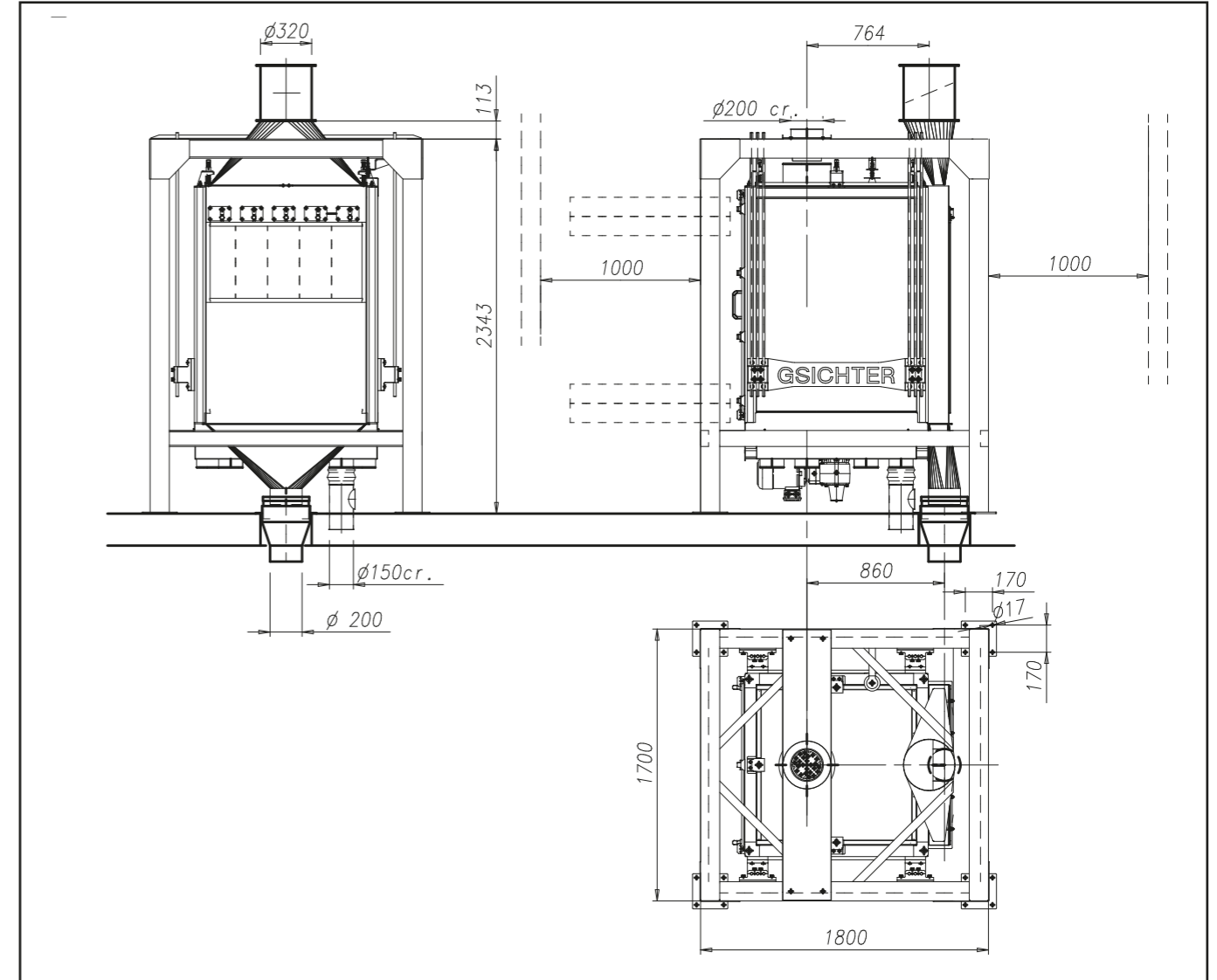


GSICHTER

Plansichter for cereals

Machine designed to realize detailed separation and selection of scraps from the product, by taking advantage of a strong metallic construction containing aluminium sieve stacks with 12m² of sifting surface. The GSICHTER performs a continuous sieving treatment on a surface that is wider than traditional separators, eliminating all external cereals with dimensions that are different from the ones of the product, without the need for a specific machine. The scraping activity during the sieving process favors detachment of the lighter parts, ensuring their elimination in the machine itself.



Sifting area m ²	* Capacity t/h wheat	Power kW	Air consumption m ³ /1'	Weight Kg
12	35	2,2	80	1800

* Soft wheat 0,75t/m³
Units = mm