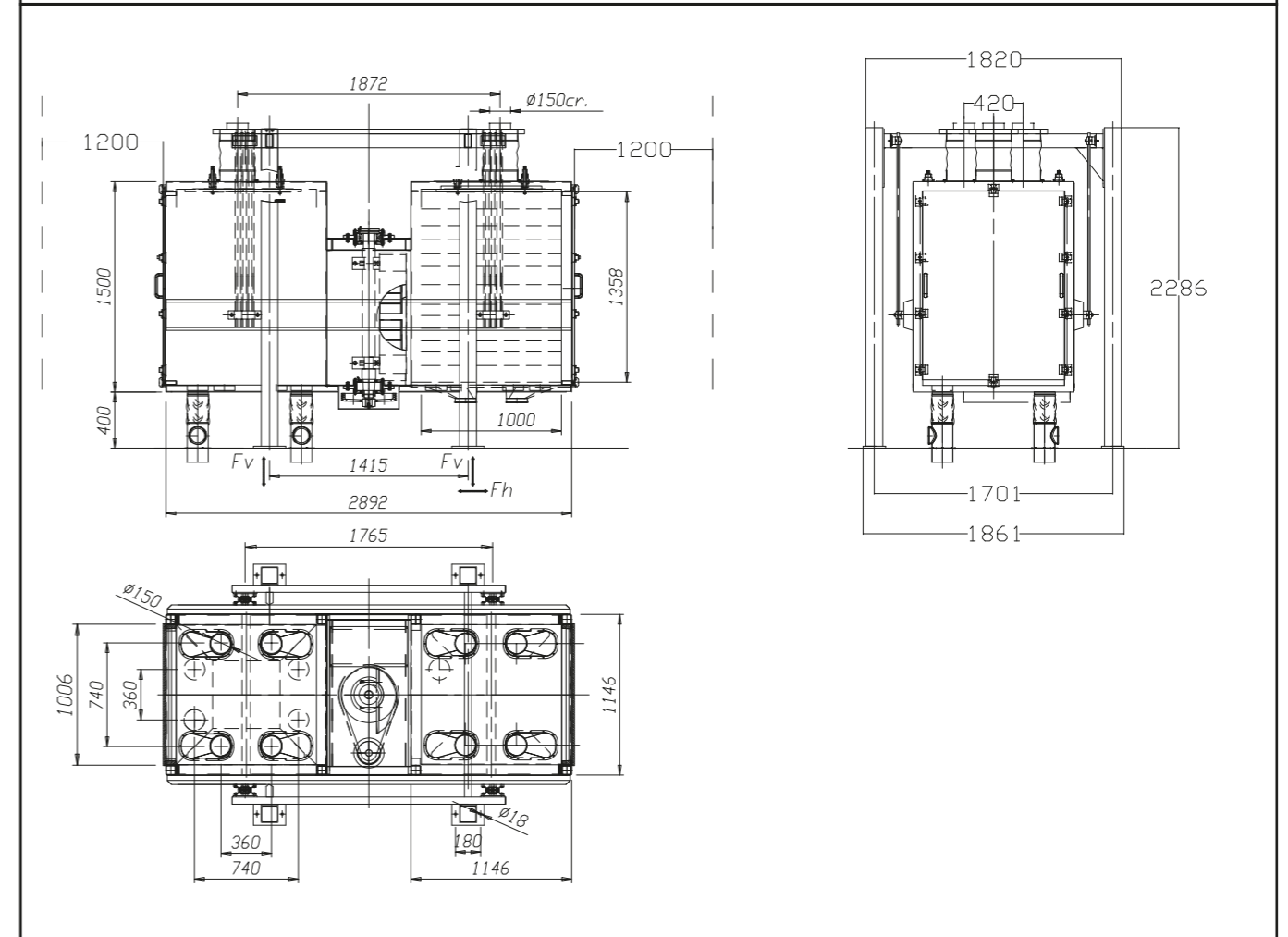
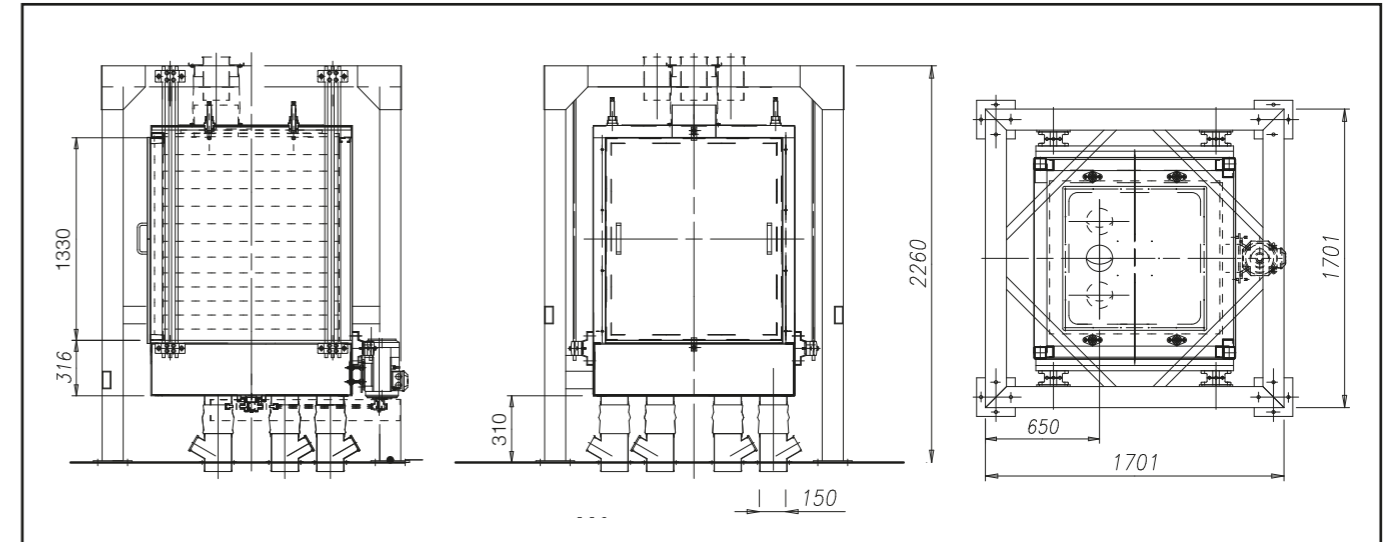
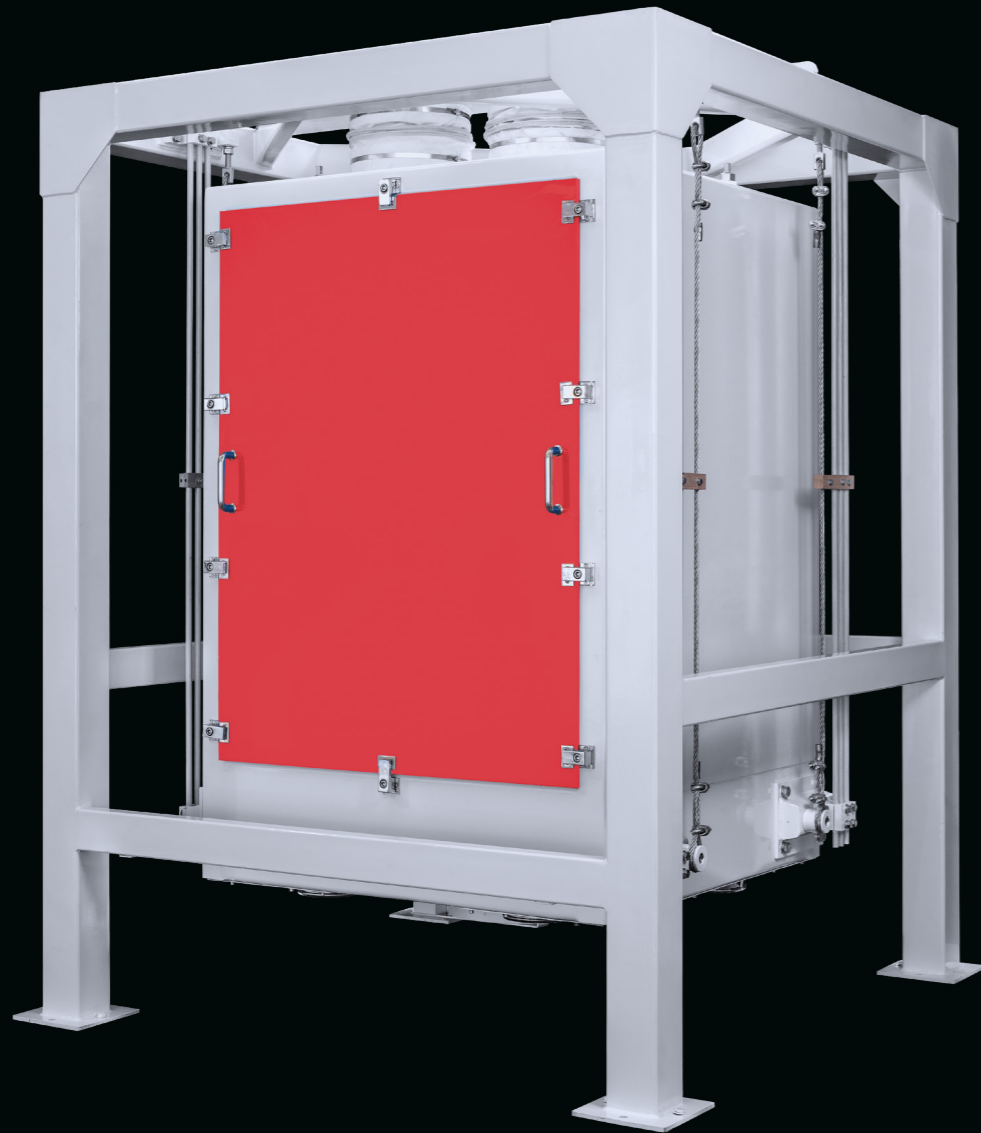


# GSPM

## Control Plansifter

The machine is composed by one, or two sieve boxes, with 8, 10, 12 sieves. It conducts final sieving on flour before bagging, ensuring high efficiency and reliability. The square shape of the sieving frames favors a rapid and even distribution of the product on the whole surface, with significant thickness and natural stratification.



Model	Sifting Area m <sup>2</sup>	Capacity [flour] * T/h	Power kW	Weight Kg
Single channel	11	15	1,5	950
Double channel	22	30	2,2	1500

(\*) For flour 250 micron with max 15.5% humidity  
Units = mm