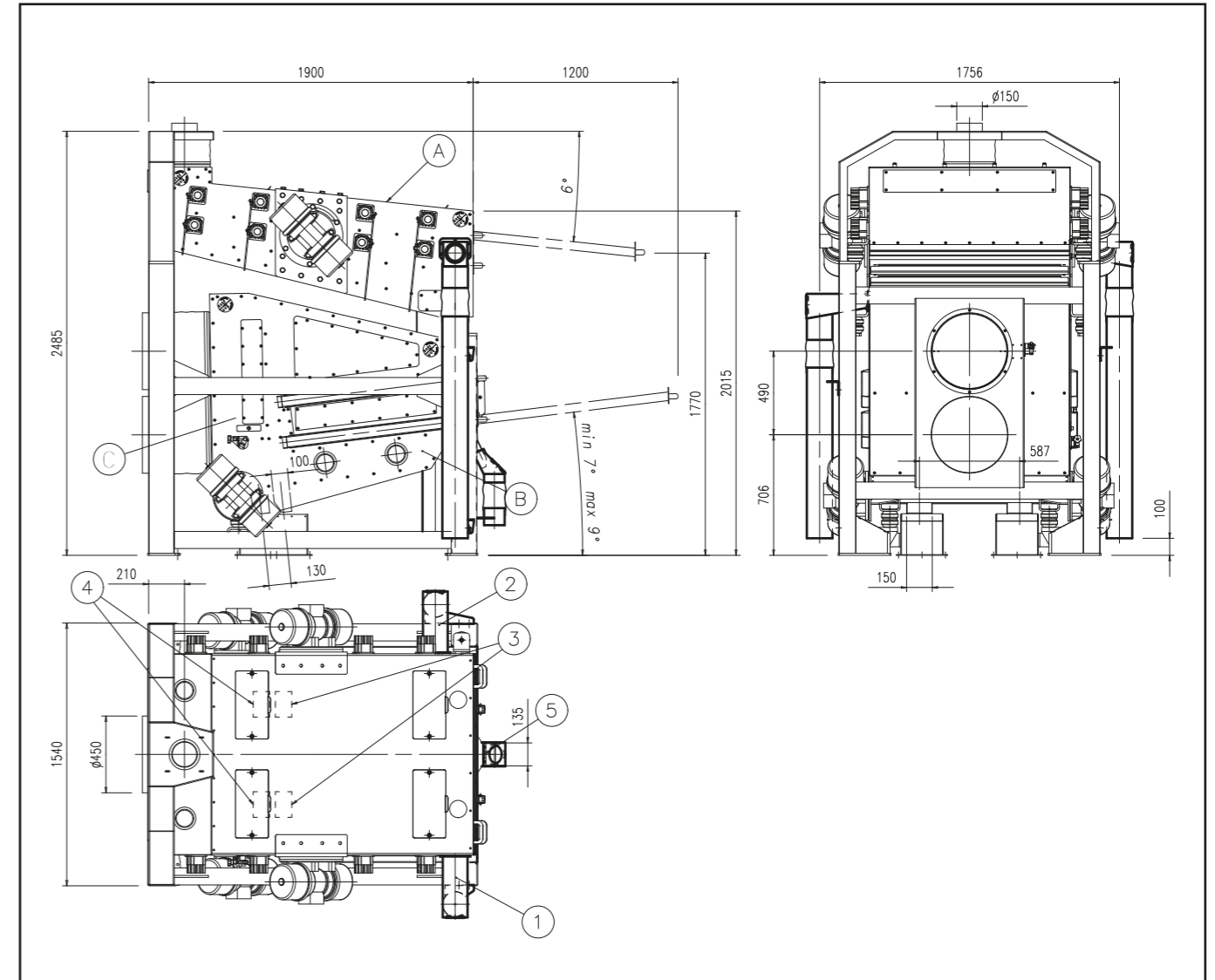
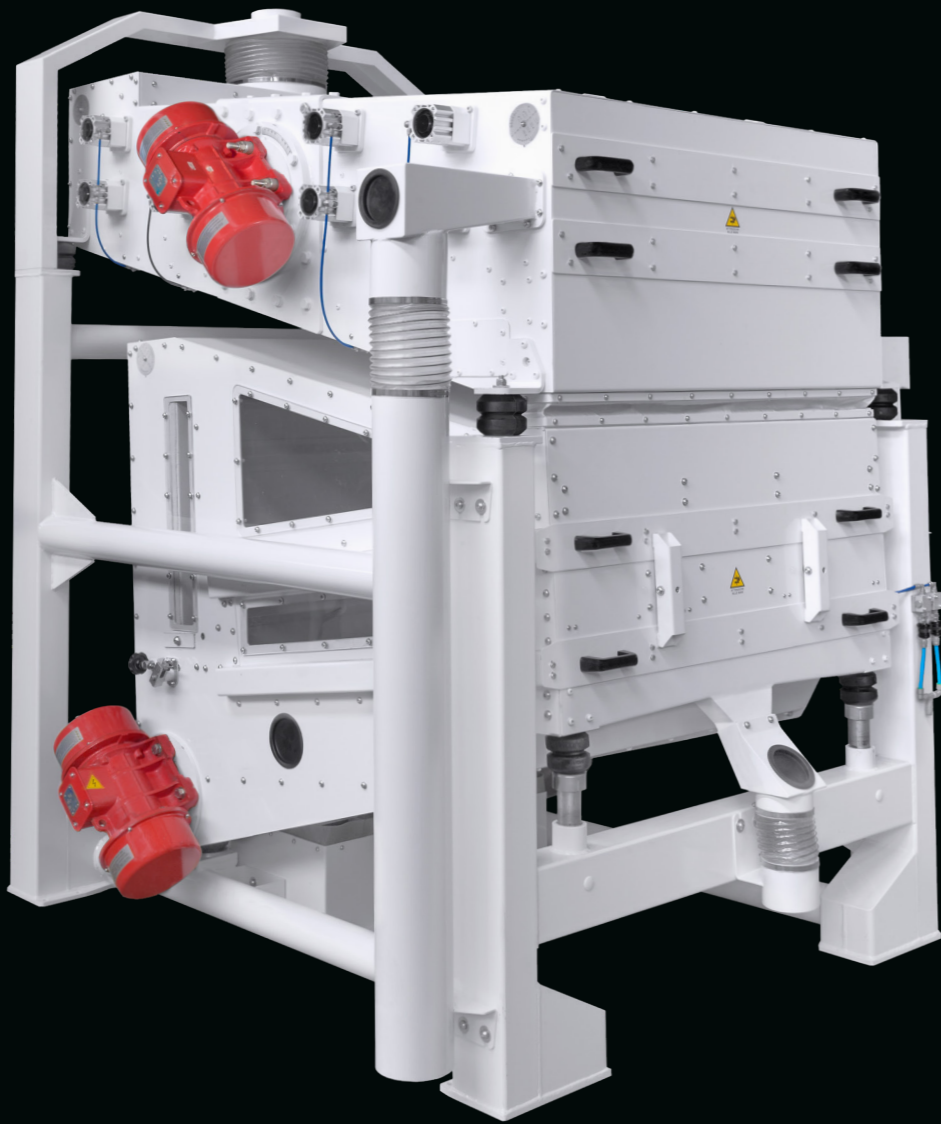


MCS - MULTICLEANER

Vibro gravity separator

The machine is used to clean, classify and remove stones from cereals. The MCS features a separator, a gravity selector and an aspiration system. The separator, thanks to a sieve, divides the smaller particles from the bigger ones. Consequently, the smaller ones go through the Gravity selector, which separates the heavier from the lighter ones. Finally, the aspiration system removes the lighter parts remained. By combining three process phases in one machine, the MCS reduces installation and maintenance costs.



- A Separator
- B Selector destoner
- C Air separator

- ① Coarse screenings
- ② Sand broken grains
- ③ Heavy fraction
- ④ Light fraction
- ⑤ Stones

Model	* Capacity t/h wheat	Aspiration m ³ /min	Vibromotor kW	Weight Kg
MCS/20	12-25	160	4x0,68	1850

* Soft wheat 0,75t/m³
Units = mm