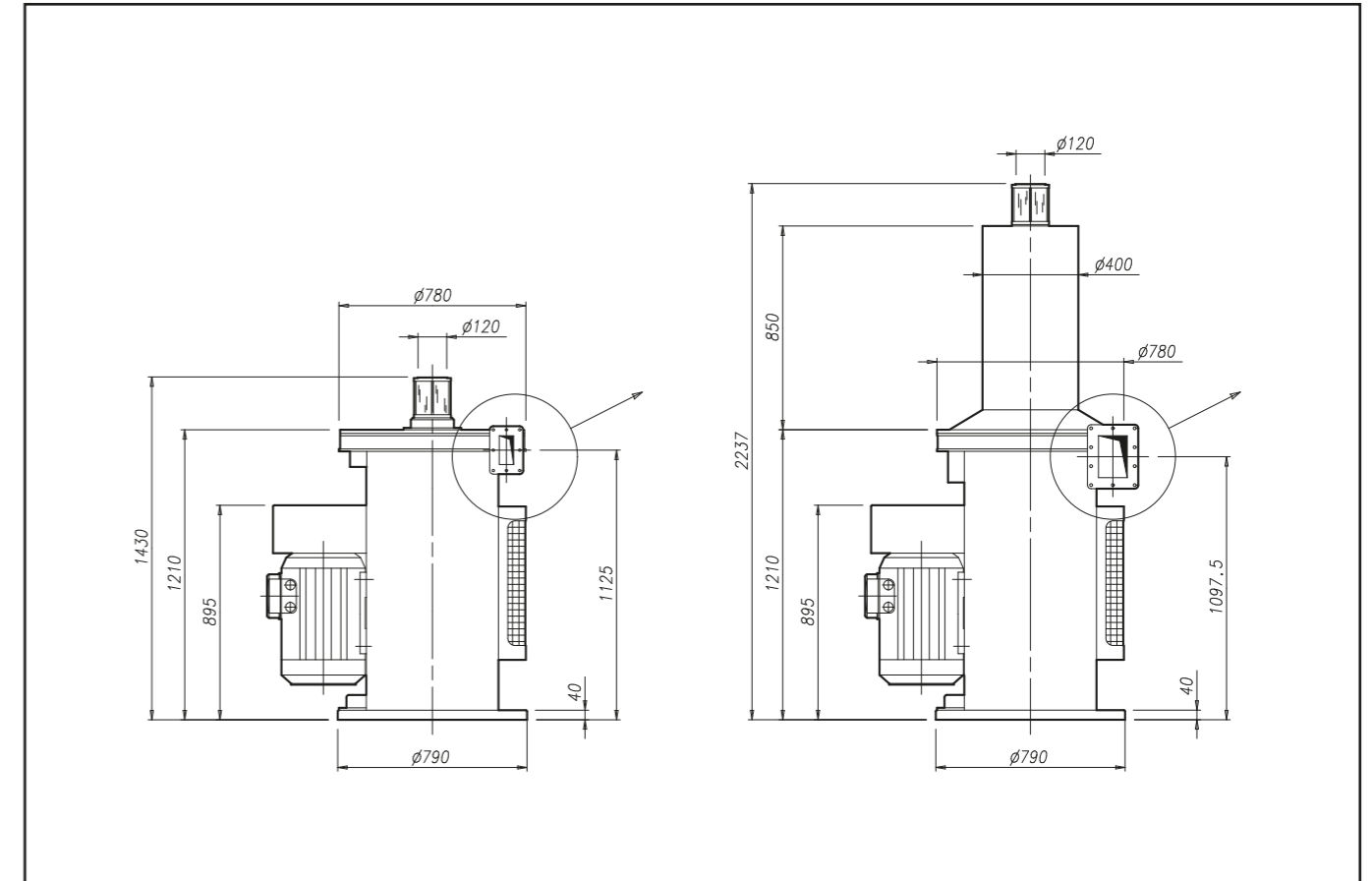
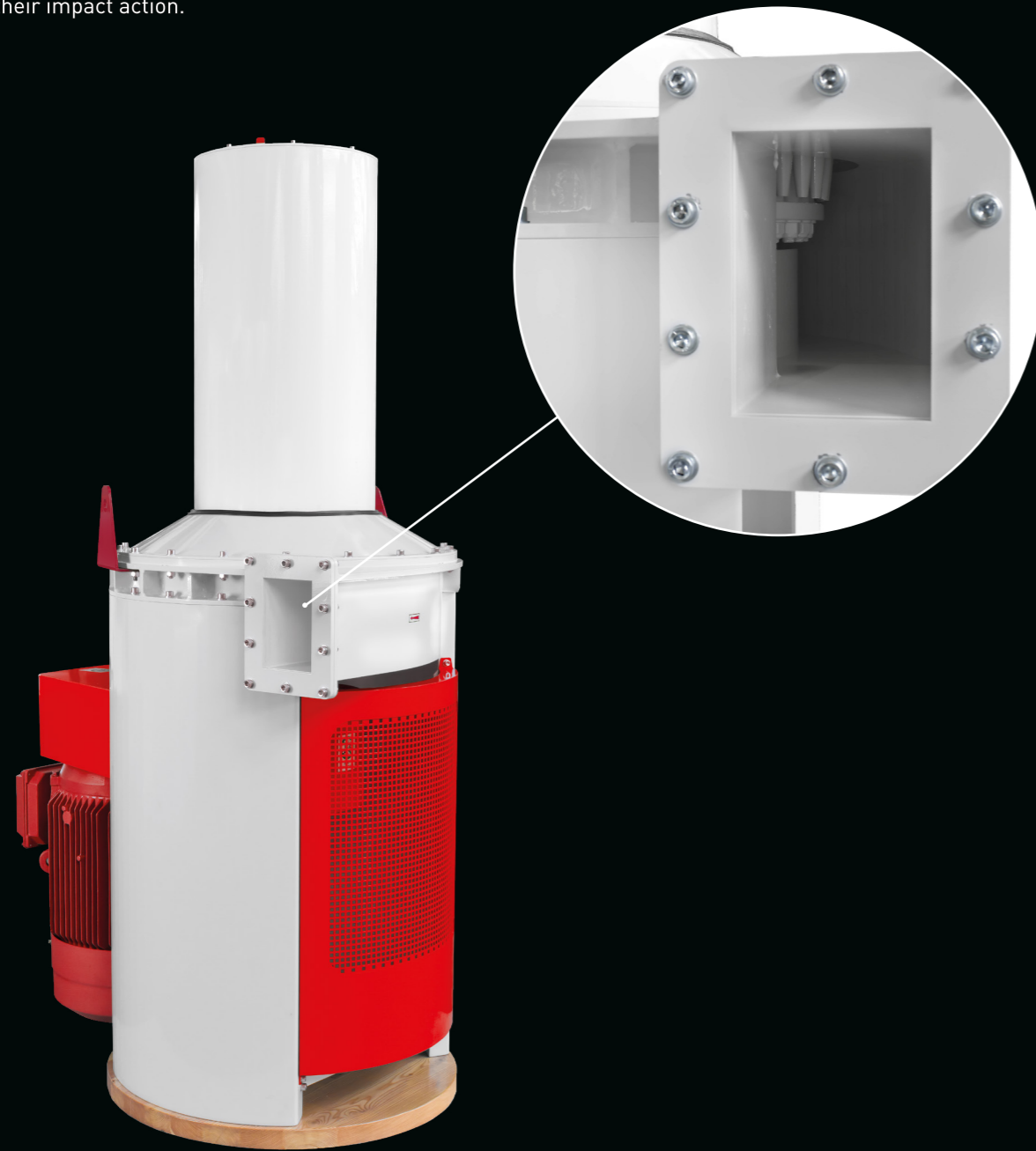


MF-MB

Millishort System

The system is a technical innovation for the achievement of more compact mills. It is composed of two machines, Milliflour and Millibran, which entirely substitute the roller mill in different steps of the rolling mill diagram, thanks to their impact action.



Model	Motor Kw	Capacity T/h		Weight Kg
		3 BK	5 BK	
MB/11	11	2	1,4	530
MB/15	15	2,8	2	550
MB/18,5	18,5	3,5	2,5	560
MB/22	22	4	3	605

Model	Motor Kw	Capacity T/h	Weight Kg
MF/18,5	18,5	1	665
MF/22	22	1,5	685
MF/30	30	2,5	720

Units = mm