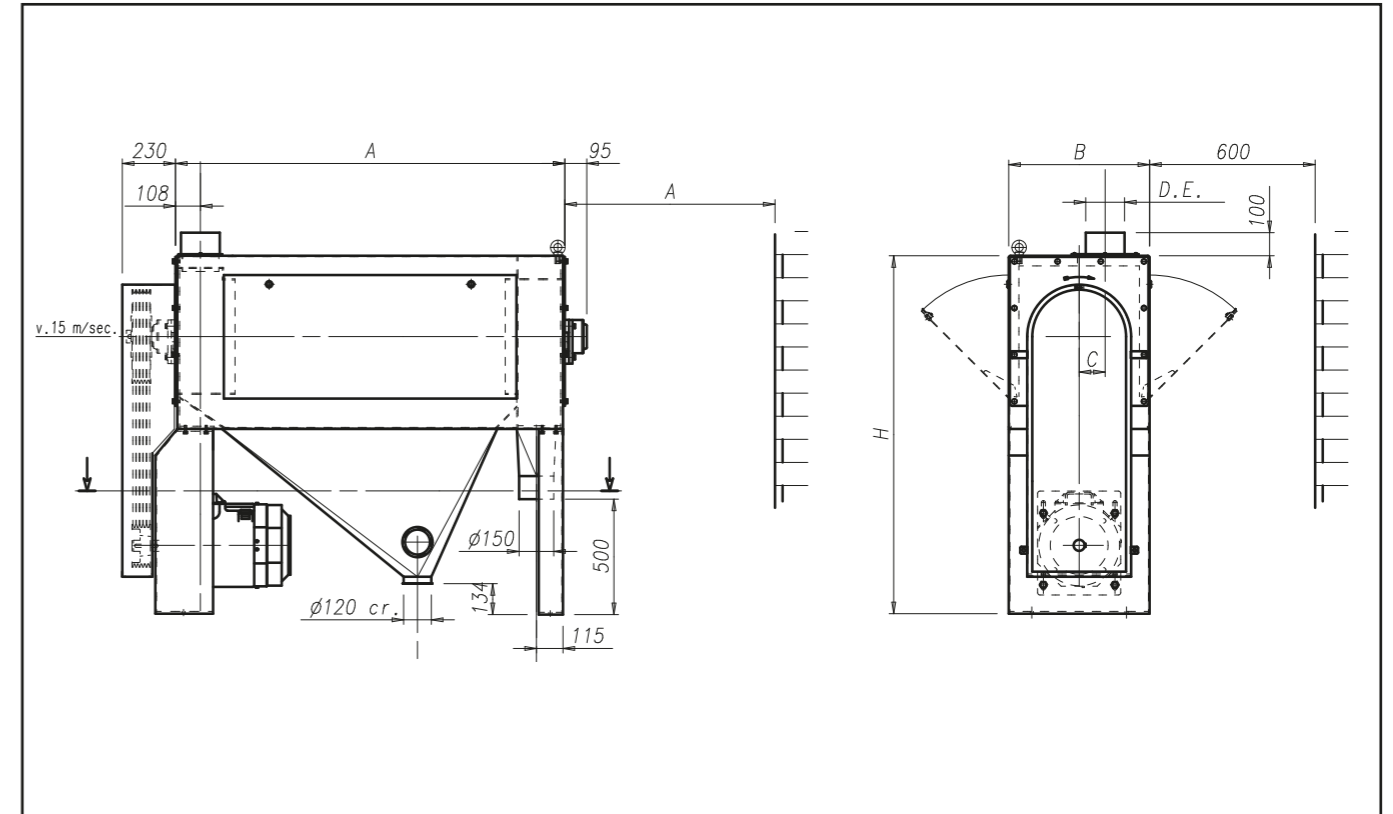


# PO

## Horizontal Scourer

It performs a cleaning action, removing the superficial parts of the bran and barbette, parts of the seed and powder that remained in the grain. This action is carried out thanks to a strong motor and sieves made with highly resistant steel mesh. Thanks to the inclination of the featured palette, the healthy grains are not damaged but directed to the unloading area.



Type	*Capacity t/h	Motor Kw	Aspiration m <sup>3</sup> /min	A	B	C	D	D.E	F	G	H	Weight Kg	Volume m <sup>3</sup>
PO 35/135	8	7,5	5	1375	500	95	628	120	390	1305	1350	480	1,1
	10	9,2											
PO 50/165	15	11	8	1670	610	155	515	150	500	1588	1550	850	1,8
	20	15											
	25	22											

\* Soft wheat 0,75t/m<sup>3</sup>  
Units = mm