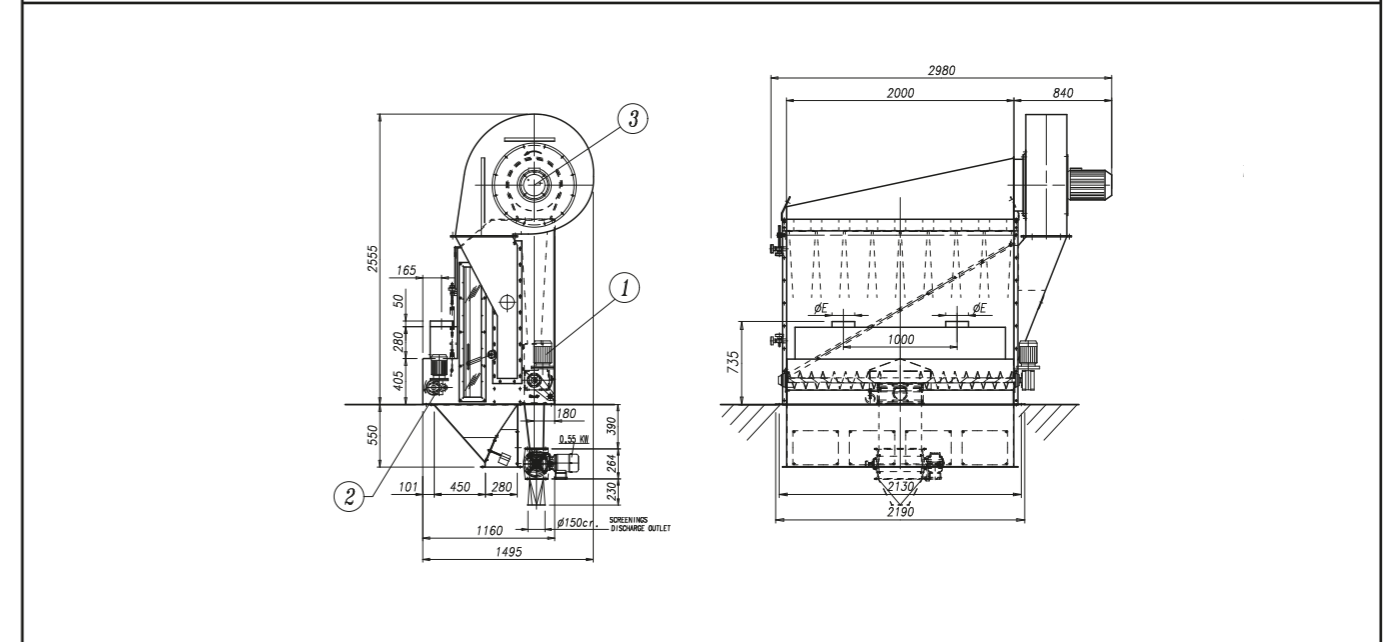
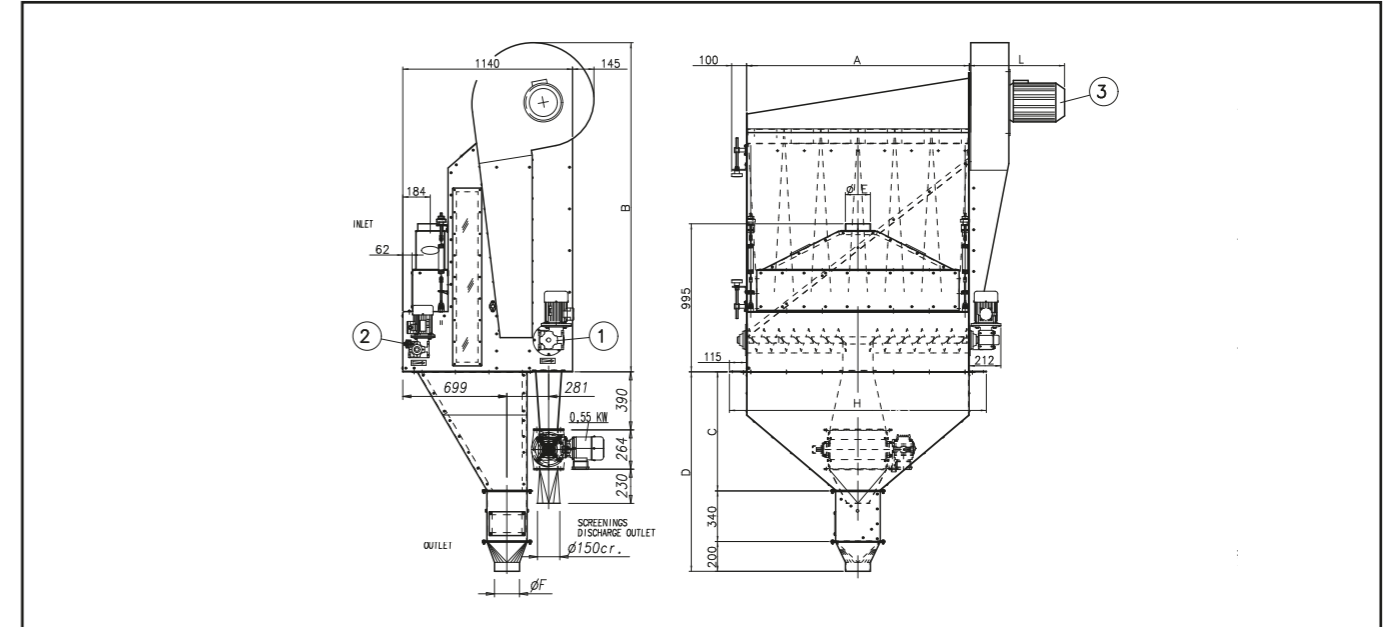


SCC

Closed Air Cycle Separator

The SCC is utilized in the cleaning of grains to remove light impurities like seeds, withered grains, empty kernels, husks, insects and powders from the product flow. The selection level, set up by the operator, is executed through an air division screen by means of kinematics levers, while the machine features a helical bevel geared motor, directly coupled to the driving shaft of the dosing and powder discharge valve.



SCC/A	*CapacityT/h Cleaning Silos		Gear motors Kw 1 2		Motor 3 Kw	A	B	C	D	F	Weight Kg	Vol. m ³
75	12	50	0,55	0,55	2,2	750	2120	600	1140	133	675	5
100	16	66	0,55	0,55	3	1000	2170	650	1340	168	900	6
150	24	100	0,55	0,55	5,5	1500	2220	800	1340	194		
										250	1200	8

SCC	*CapacityT/h Cleaning Silos		Gear motors Kw 1 2		Motor 3 Kw	Weight Kg	Vol. m ³
200	32	132	0,75	0,55	Kw 5,5	1500	12

* Soft wheat 0,75t/m³
Units = mm