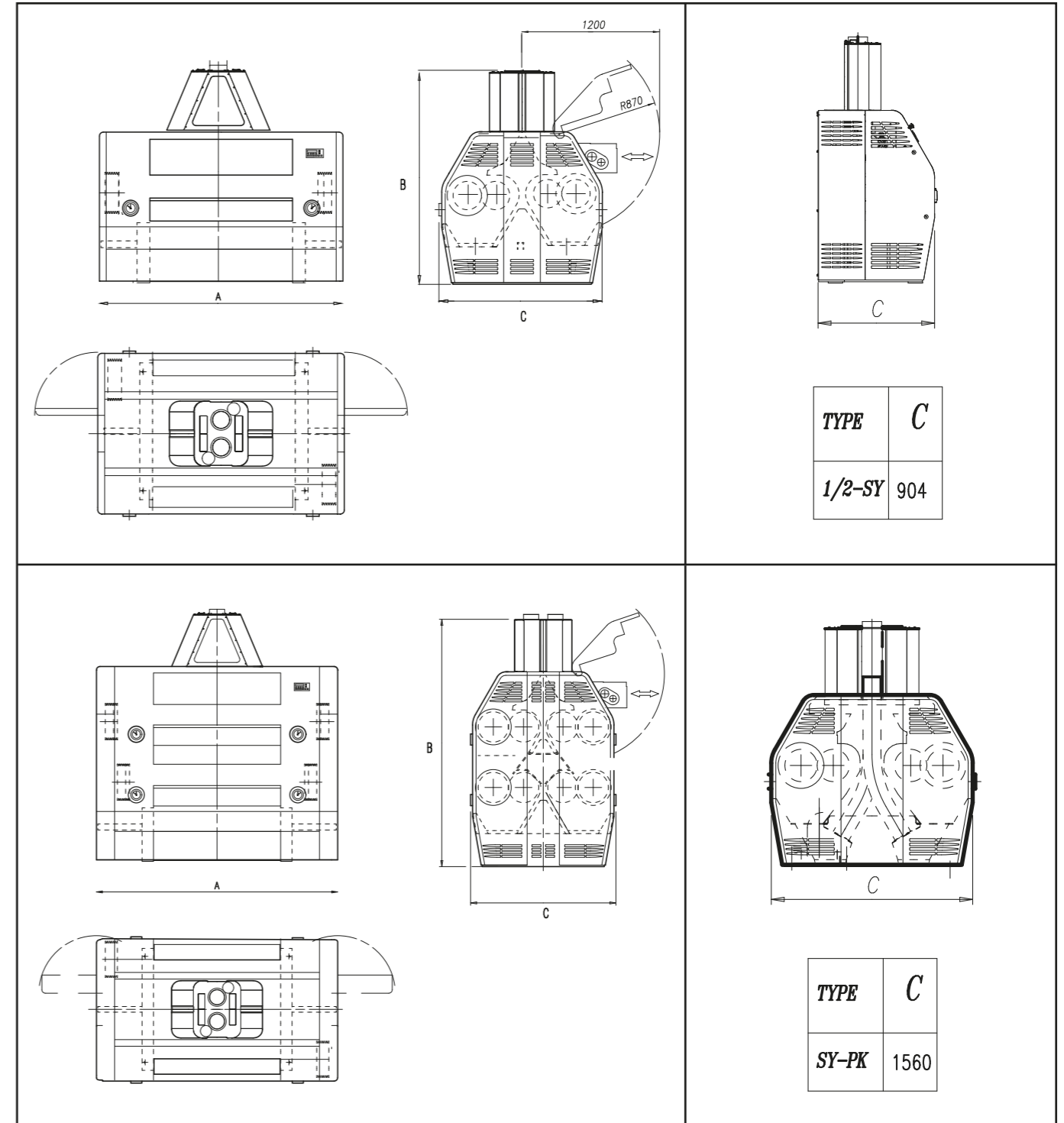


SYNTHESIS

Rollermill Synthesis

The Synthesis rollermill takes on board the very best in milling technology and the skills sharpened by Golfetto Sangati in over 80 years of combined experience in the sector. The most popular, high performance machine on the market, Synthesis comes in 2,4 and 8 rolls versions. Simple to run and versatile enough to cope with the specific milling requirements of whatever country it operates in.

All models can be supplied with rolls of 250 or 300 mm in diameter.



TYPE	C
1/2-SY	904

TYPE	C
SY-PK	1560

Model	A	B	C	Weight	
				250	300
SY 80-4	1700	1850	1440	2700	3200
SY 100-4	1900	1850	1440	3370	3880
SY 125-4	2150	1850	1440	3950	4450
SY 150-4	2400	1850	1440	4370	4870

Model	B	Weight	
		250	300
SY 80-8	2450	5360	6200
SY 100-8	2450	6200	7040
SY 125-8	2450	6600	7680
SY 150-8	2450	7365	9100

Units = mm

