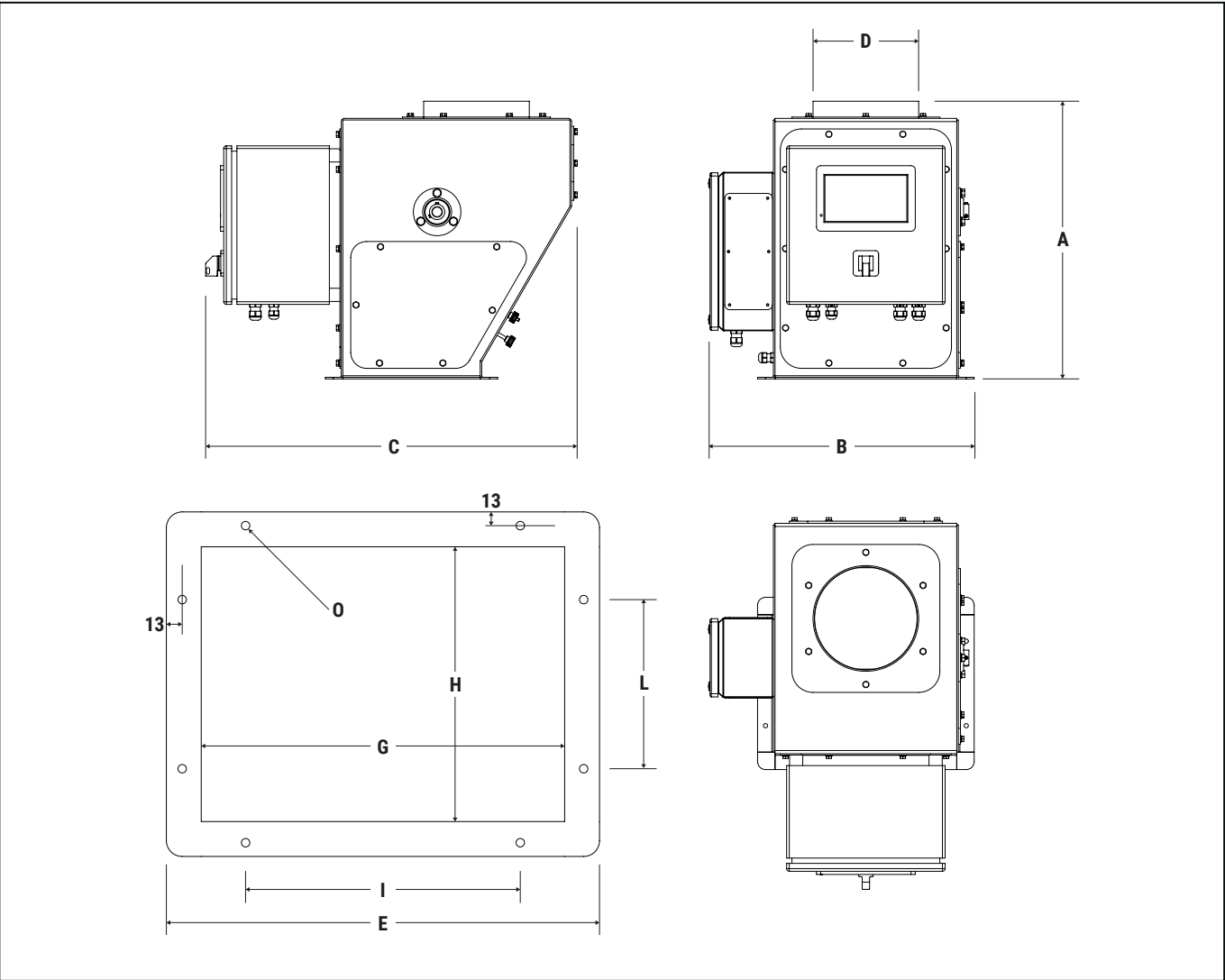
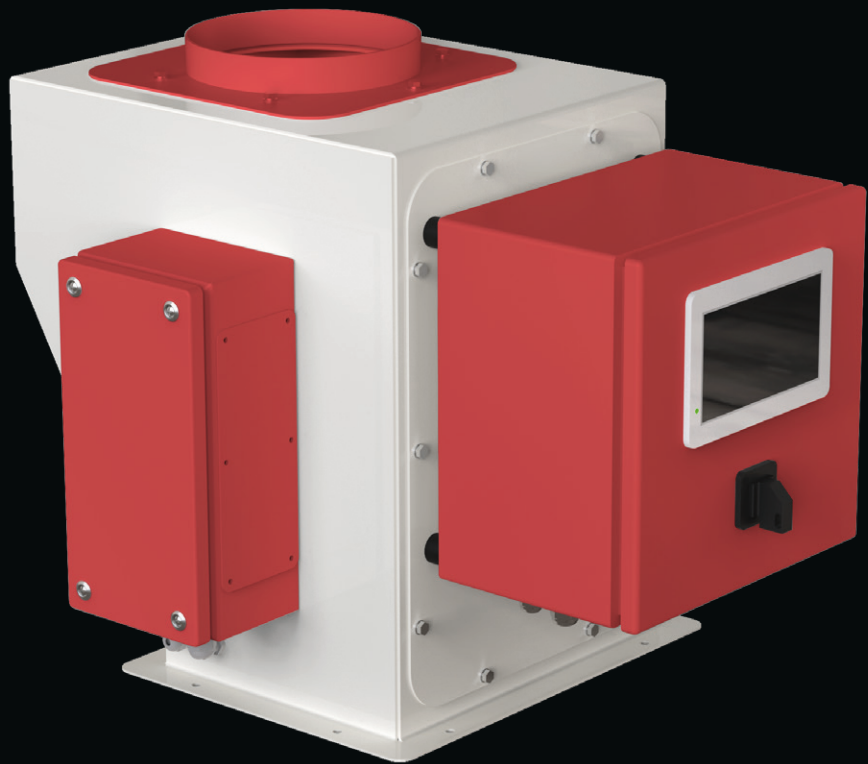


MPDC

Flow Measures

The Ponderal Dosing MPDC permit the flow measurement and setting of the granular products, as well as the total countering of the product. The typical installation of this device is on series type in way to mixing multiple products in same production line. Thank to a communication protocol it is possible to control and setting the machine with a remote PC station in way to be easy the creation of the mix recipes.



| Type | A mm | B mm | C mm | D Ø mm | E mm | F mm | G mm | H mm | I mm | L mm |
|---------|---------|---------|---------|-----------|---------|---------|---------|---------|---------|---------|
| MPDC15 | 450 | 480 | 620 | 120/150 | 390 | 300 | 324 | 234 | 220 | - |
| MPDC30 | 525 | 500 | 700 | 150/200 | 410 | 326 | 344 | 260 | 260 | 160 |
| MPDC100 | 615 | 570 | 770 | 200/250 | 480 | 396 | 414 | 330 | 270 | 240 |

| Type | Weight Kg | Flow Max T/h (750 kg/m3) | Flow Min T/h (750 kg/m3) | Precision % | Power Supply AC | Frequency Hz | Power VA |
|---------|--------------|-----------------------------|-----------------------------|----------------|--------------------|-----------------|-------------|
| MPDC15 | 40 | 15 | 0.2 | 1 | 110/230 | 50/60 | 60 |
| MPDC30 | 45 | 30 | 0.4 | 1 | | | |
| MPDC100 | 53 | 100 | 5 | 2.5 | | | |